



Moodle Plugin for CopySafe PDF

About this Plugin and CopySafe PDF

This Moodle plugin enables websites using Moodle CMS to upload, display and manage pages and posts that display protected PDF documents created by the CopySafe PDF software. CopySafe PDF software is a separate application to this Moodle plugin and a license is required to apply Domain Lock on protected PDF so that they remain secure while displayed on your website.

This Moodle plugin is provided as a free add-on.

Domain Lock

Using Domain Lock prevents your protected PDF from being exploited by display on any other website, where protection levels can be altered to enable copy and dissemination of your document. But when Domain Locked to your website, it can only be displayed on your web pages, where you have control over the protection settings. To use Domain Lock you first need a license for the CopySafe PDF Protector software, plus a license key for each website that you want to use.

Using CopySafe PDF in Moodle Web Pages

CMS solutions like DNN, Joomla, Drupal, Moodle, WordPress and others make it easy for non-technical people to create and manage sophisticated websites. But adding new functions requires complex programming that can be beyond most web designers. So a plugin like this one is provided as an add-on, so that new functions like the display of CopySafe PDF documents, is made as easy as point-and-click with a mouse, while editing new or existing web pages with Moodle page editor.

Installation

This plugin can be installed like most other Moodle plugins by copying the files to plugins folder and enabling the plugin from the site admin's Configuration page.

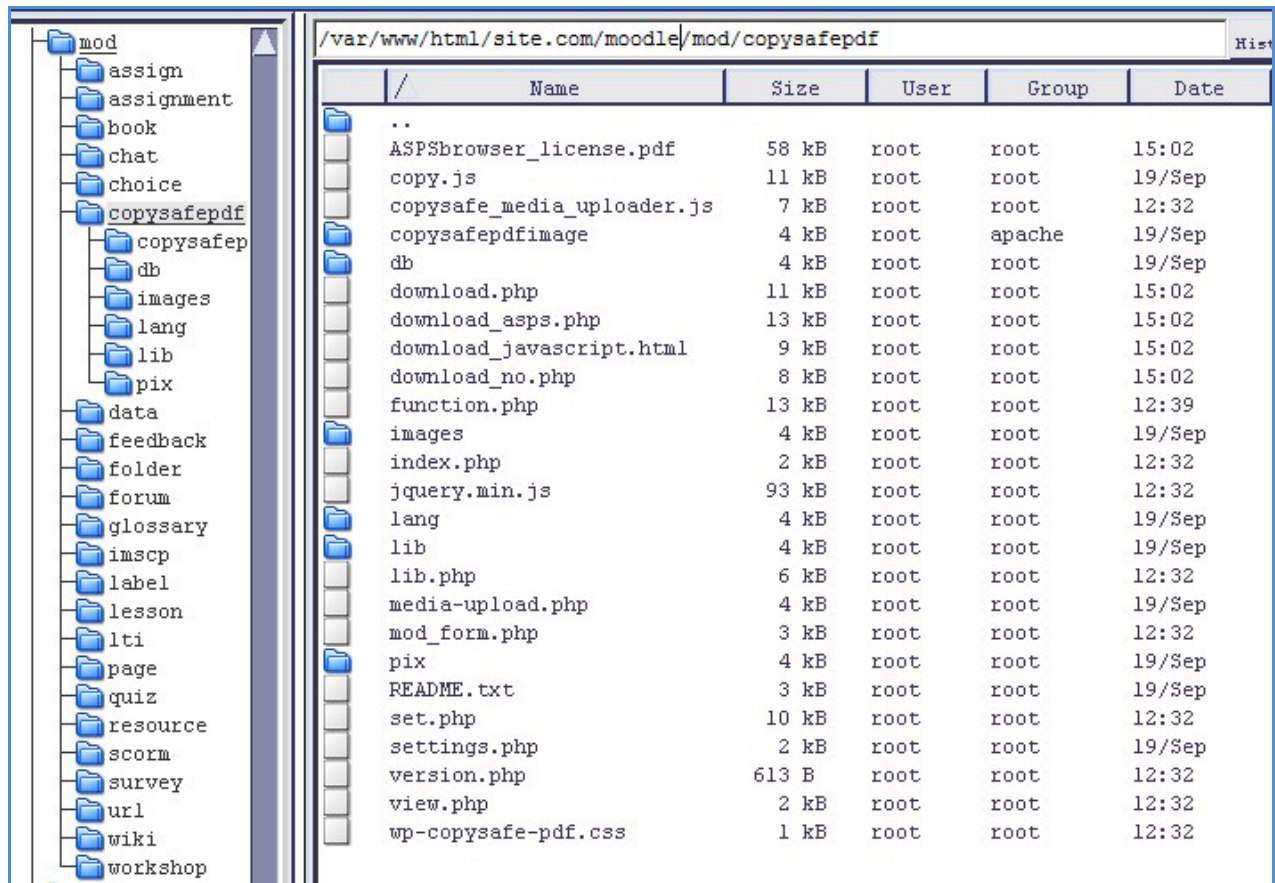
Browser Support

The latest versions of popular browsers like Internet Explorer, Chrome and Chromium clones like Edge, Opera and Safari no longer support NPAPI browser plugins that can interact with a computer at system level. So today, only the ArtisBrowser, one properly designed to protect rather than exploit web media, will provide no-nonsense support for all CopySafe solutions.

From your settings page you can nominate which browsers are allowed access. For the most secure protection we recommend that you allow the ArtisBrowser only. This module includes the appropriate detection and download pages to redirect if required.

Installation of the CopySafe PDF module

1. Copy the folder named 'copysafepdf' to Moodle's module directory at 'moodle/mod/'

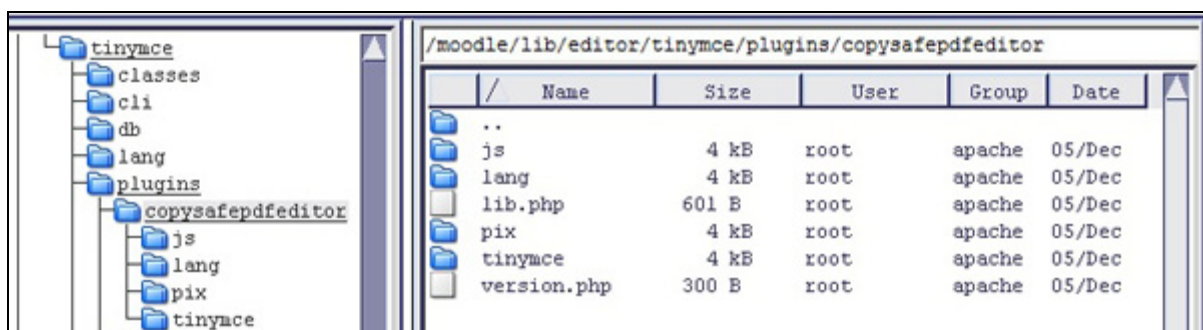


Check that the user "apache" has read permission on all files in this folder.

2. Set write, read and execute permissions for user "apache" on the **copysafepdfimage** folder. On some systems you may need to change SELinux Context by using:

```
# chcon -R -t httpd_sys_content_rw_t /var/www/html/example.com/mod/copysafepdf/copysafepdfimage
```

3. Unzip the 'copysafepdfeditor.zip' and copy the folder named 'copysafepdfeditor' to 'moodle/lib/editor/tinymce/plugins'



Check that the user "apache" has read permission on all files in this folder.

4. Paste the code mentioned below to the end of 'moodle/index.php' file just above the footer code.

```
$liburl = new moodle_url('/mod/copysafepdf/jquery.min.js');  
$copyurl = new moodle_url('/mod/copysafepdf/copy.js');  
?>  
<script> var cfgroot = '<?php echo $CFG->wwwroot;?>'; </script>  
<script src="<?php echo $liburl; ?>" type="text/javascript"></script>  
<script type="text/javascript" src="<?php echo $copyurl; ?>"></script>  
<?php
```

5. Also paste the code above to 'moodle/course/index.php' at the end just above the footer code.

6. Also paste the code above to 'moodle/mod/page/view.php' at the end just above the footer code.




7. Also paste the code above to 'moodle/mod/lesson/view.php' at the end just above the footer code.

8. Go to Site Administration > Notifications - Click to 'Update Moodle database now'.

The next window should report that both plugins have been successfully installed.

Click to continue. You should then be redirected to the Settings page.

9. Set priority - Site Administration -> Plugins-> Text editors-> Manage editors, move TinyMce to top.

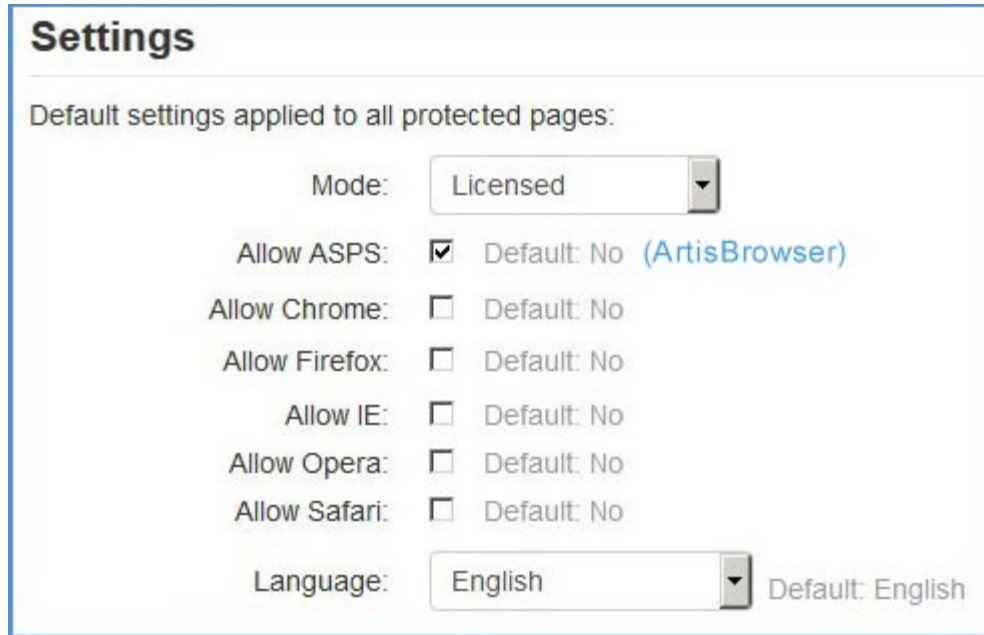
Available text editors				
Name	Enable	Up/Down	Settings	Uninstall
TinyMCE HTML editor		↓	Settings	Uninstall
Atto HTML editor		↑ ↓	Settings	Uninstall
Plain text area		↑		

10. Nominate the settings applied to all CopySafe PDF pages.

Note: only one instance of jquery.min.js is required, so if you also have the CopySafe Web module installed on the same web site, you only need one instance of \$liburl mentioned in step 4.

Module Settings

These settings are applied to all CopySafe PDF pages, unless otherwise specified on individual pages.



Settings

Default settings applied to all protected pages:

Mode:	Licensed
Allow ASPS:	<input checked="" type="checkbox"/> Default: No (ArtisBrowser)
Allow Chrome:	<input type="checkbox"/> Default: No
Allow Firefox:	<input type="checkbox"/> Default: No
Allow IE:	<input type="checkbox"/> Default: No
Allow Opera:	<input type="checkbox"/> Default: No
Allow Safari:	<input type="checkbox"/> Default: No
Language:	English Default: English

Mode

You can set the Mode and change it at any time for debugging purposes:

1. Demo Mode - displays a placeholder image.
2. Licensed Mode - displays encrypted PDF and activates the CopySafe PDF browser plugin.
3. Debugging Mode - displays the html used in the object tag in a text area form object.

Select Browsers

This selection enables site owners to control who can access their protected PDF pages. If a browser is not allowed, then site visitors using that web browser will be redirected to a page explaining that their browser was not permitted by the site owner. Browser selection is commonly used in corporate intranets where all users might be using the same browser. However the most recent versions of popular browsers no longer NPAPI plugins so the best option is to require that visitors use ArtisBrowser only for its no-nonsense support for copy protection and its added protection.

Language

The default language is English but you can use this setting to change the language to be used on all pages. This language setting is only applied to the buttons and messages within the Reader window area.

Using the CopySafe PDF module

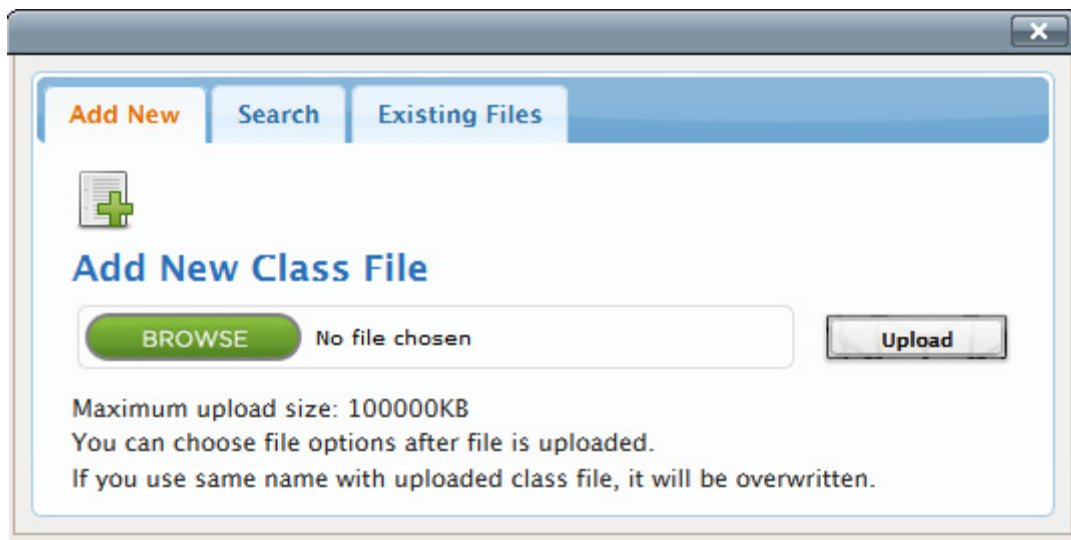
To create a CopySafe PDF display select to add a new *Resource* to a course and then select *New Page* (not an Activity). To show the full tool bar options, click as below:



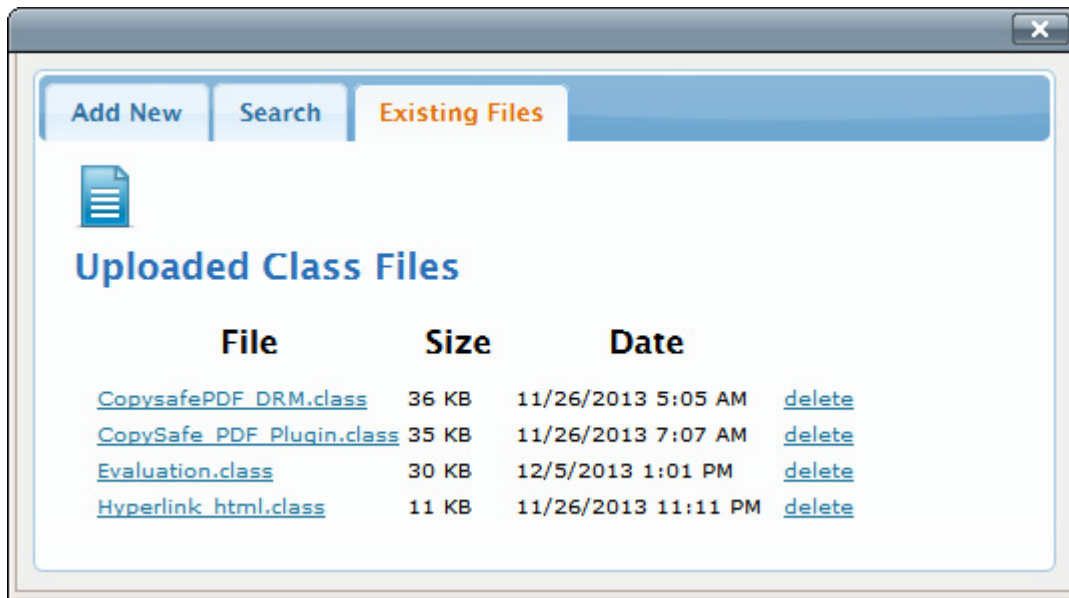
Add the code to display encrypted images at the cursor position by clicking the *CopySafe PDF* button:



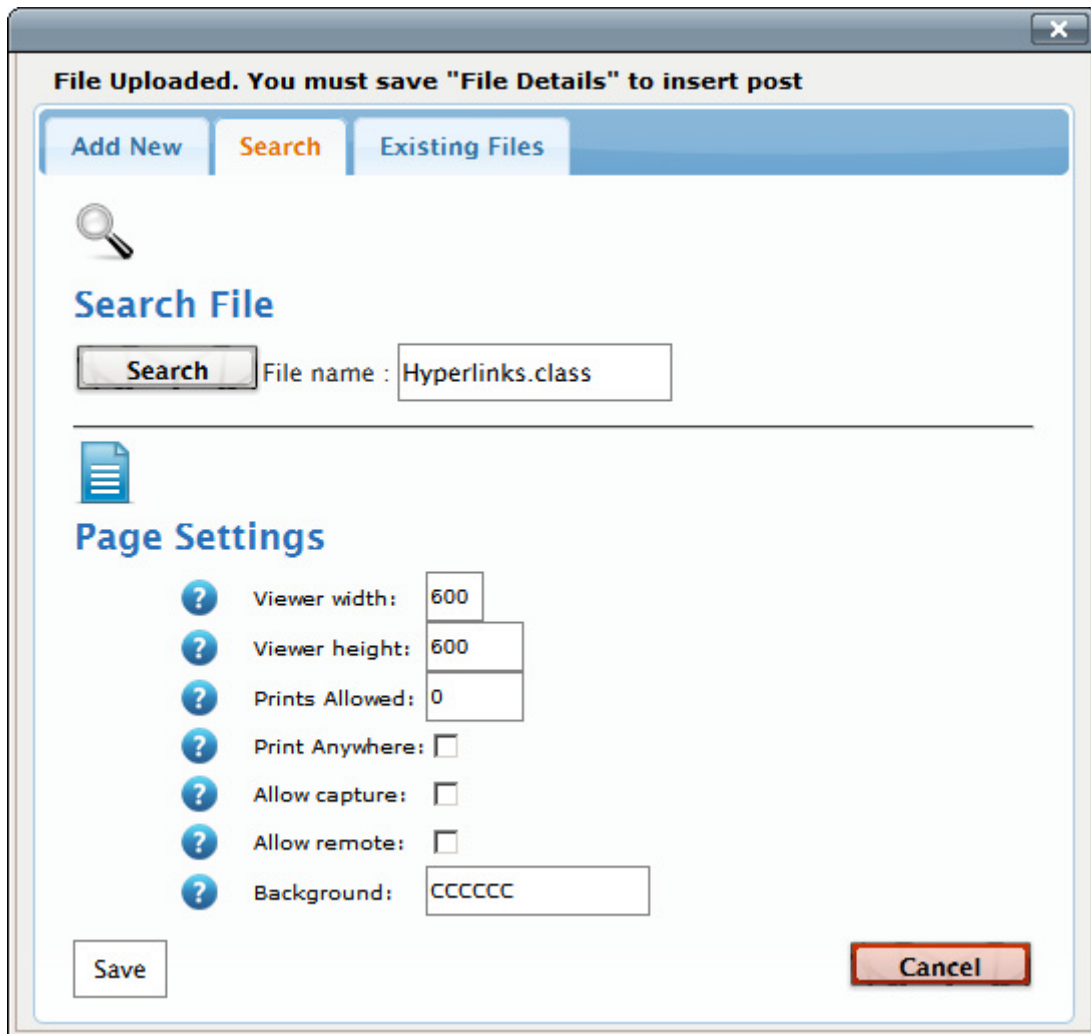
From the next screen select to upload or select from existing files that have already been uploaded.



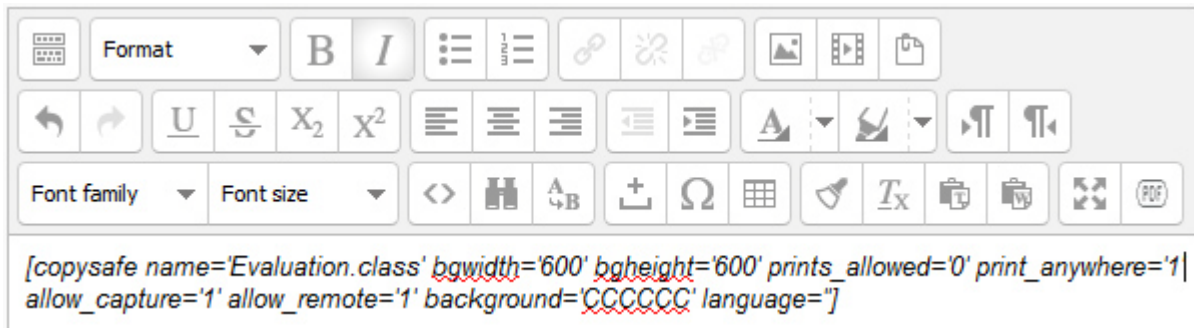
EXISTING FILES provides a list of already uploaded .class files for direct insertion while opting to BROWSE will enable the upload of new .class files and nominate page settings in the same operation.



BROWSE will enable you to select a new .class file for upload and set new page settings from the same window.



After clicking **Save** you need to select the .class file for insertion from a new list.



Editing the Shortcode

Once the shortcode for your encrypted PDF is added and the page has been saved, you may no longer be able to edit the same shortcode by clicking on the CopySafe PDF button. But now that you have shortcode, you can edit it manually at any time.

Page Settings

Name is the .class file.

Bgwidth and **bgheight** is the size of the reader window in pixels.

Prints_allowed set to 0 means that printing is not allowed. Otherwise, you can nominate a number of prints as a limit. However, this setting is only applied to the user's current session and if more stringent control is required, then this number should be set to 1 and managed programmatically by recording the number of prints and then reducing the option to 0 when the allowance has been consumed.

Print_anywhere is to be used with caution because enabling this option allows the user to print to any device, including printer-drivers that may be file-converters, thus enabling a visitor to create an unprotected document from your protected document. It is not recommended to allow this option, but it is available for web designers to programmatically enable printing to select members.

Allow_capture means that if this option is enabled, then users can use Print Screen and screen capture software to copy your document's contents. The default setting is 0 which also activates scripting to disable right-click mouse options and drag-drop of images to the desktop.

Allow_remote can enable access from remote or virtual partitions, such as when Mac users install Parallels to run Windows on their Mac. Remote viewing enables screenshots and is not recommended.

Background controls which color is used in the unused area of the Reader window, ie: the area not used by the document pages. Note that you should not include the usual # symbol that is commonly used in HTML color settings.

Language can be used to set the language used within the reader window area for button and error messages. The default is English (if left blank).

Licensing and Support

CopySafe PDF Reader Installation

Viewing protected PDF displayed on a web page using a web browser requires a browser plugin. By installing the CopySafe PDF Reader, users are then equipped with reader support for both web browsing and reading on the desktop locally.

When anyone loads a web page that displays CopySafe PDF, their browser is checked for the plugin and if it is not found they will be redirected to the appropriate download page with further instructions.

Reader & Plugin Downloads

This plugin includes the download page for the CopySafe PDF installer. That page currently links to the ArtistScope download site for the installer, but you are most welcome to download the installer and host it on your own website. Note that if you are doing this, then you will have to edit the download page to point to the new location of the download file.

Customizing the Download Pages

Any files found in the CopySafePDF folder that use “download” in their file name can be safely edited without affecting this plugin’s functions.

Licensing

This Moodle plugin is free. However, you will need a license to use the CopySafe PDF Protector and Domain Lock. See – https://www.artistscope.com/copysafe_pdf_protection.asp

Troubleshooting

The latest help and support tips can be found online in our service forum at www.artistscope.com

Uploaded .class is not added to the editor

The most probable cause for this is wrong TinyMCE version specified in **media-upload.php**. For example Moodle 2.5.1 used editor version 3.5.8 but by Moodle 2.5.9 the editor changed to 3.5.10. Check lines 20, 21 and 22, then check the version of editor at `/lib/editor/tinymce/tiny_mce` and if they do not match change lines 20, 21 and 22 so that the version matches.

Check file permissions on the upload folder (as mentioned above)

Image does not display

Some possible causes can be:

- The module's settings are not set to *Licensed Mode*.
- The encrypted PDF was not created for the domain displaying it.
- An encrypted image was elected instead of an encrypted PDF - you can tell the difference by the file name as CopySafe Web images include the image width and height in their name.
- JavaScript is disabled or there are JavaScript errors on the page.
- The CopySafe PDF Reader is either not installed or the browser type not supported.

Module is not working

If you are getting errors following installation or when you try to use the module:

- Check that the module version matches your version of Moodle.
- Check the install instructions especially the final stage.
- Try a refresh of your browser cache and the site cache.

Add as a Page and not an Activity

Adding CopySafe PDF as an *Activity* may return an error. We found that category id = 1 is hard coded and that if category id = 1 is not found in the Moodle site then the error is given. If your site has category id = 1, then there will be no error message.

NOTE: This module is not designed to function as an *Activity* so it should not be used by adding an *Activity* to a course. Instead, to display CopySafe PDF you need to select "Create a new PAGE" and then insert the PDF from the PDF button in the editor's tool bar.